

METTL14 Rabbit pAb 7 Publications

Basic Information

Catalot No. : Gab202205

Observed MW : 60kDa

Calculated MW : 52kDa

Category : Primary antibody

Applications : WB, IHC, IF, IP

Cross-Reactivity : Human, Mouse , Rat

Recommended Dilutions

WB 1:500 - 1:2000

IHC 1:50 - 1:200

IF 1:50 - 1:200

IP 1:50 - 1:200

Immunogen Information

Gene ID : 57721 **Swiss Prot** : Q9HCE5

Immunogen : Recombinant fusion protein containing a sequence corresponding to amino acids 1-210 of human METTL14 (NP_066012.1).

Synonyms : METTL14; hMETTL14

Product Information

Source	Isotype	Purification
Rabbit	IgG	Affinity purification

Storage

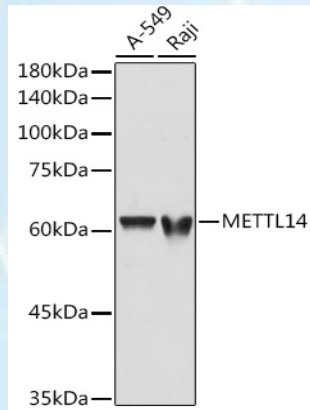
Store at -20 . Avoid freeze / thaw cycles.
Buffer: PBS with 0.02% sodium azide,50% glycerol,pH7.3.

订购电话: 021-55089063

网址: www.genelily.com

技术支持: service@genelily.com

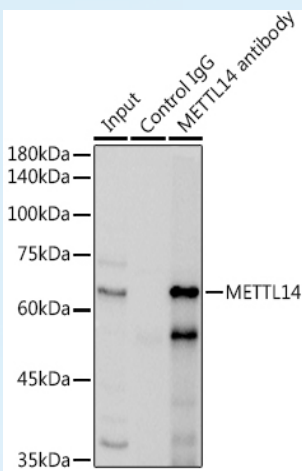
Validation Data



Western blot analysis of extracts of various cell lines, using METTL14 antibody (Gab202205) at 1:1000 dilution.
Secondary antibody: HRP Goat Anti-Rabbit IgG (H+L) at 1:10000 dilution.
Lysates/proteins: 25ug per lane.
Blocking buffer: 3% nonfat dry milk in TBST.
Detection: ECL Basic Kit .
Exposure time: 10s.



Western blot analysis of extracts of various cell lines, using METTL14 antibody (Gab202205) at 1:1000 dilution.
Secondary antibody: HRP Goat Anti-Rabbit IgG (H+L) at 1:10000 dilution.
Lysates/proteins: 25ug per lane.
Blocking buffer: 3% nonfat dry milk in TBST.
Detection: ECL Basic Kit .
Exposure time: 90s.



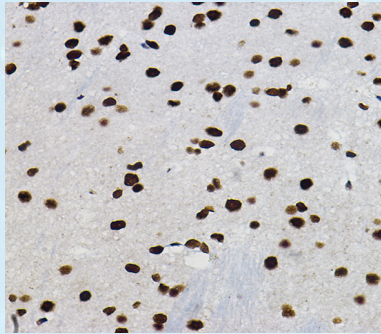
Immunoprecipitation analysis of 300ug extracts of HepG2 cells using 3ug METTL14 antibody (Gab202205). Western blot was performed from the immunoprecipitate using METTL14 antibody (Gab202205) at a dilution of 1:1000.

订购电话: 021-55089063

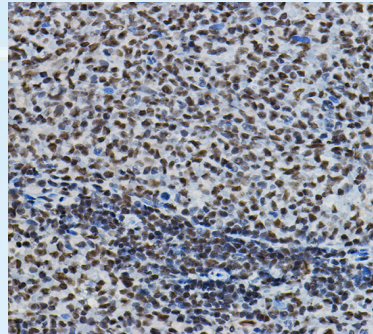
网址: www.genelily.com

技术支持: service@genelily.com

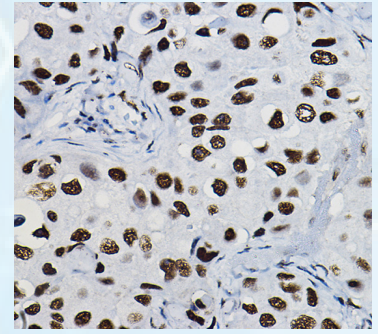
Validation Data



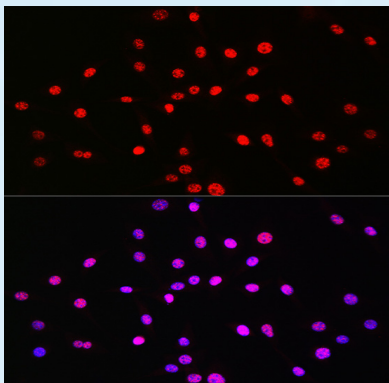
Immunohistochemistry of paraffin-embedded Mouse brain using METTL14 antibody(Gab202205) at dilution of 1:100 (40x lens).



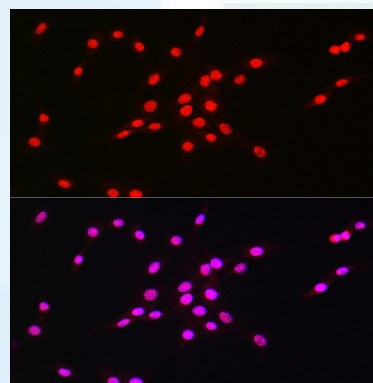
Immunohistochemistry of paraffin-embedded Rat spleen using METTL14 antibody (Gab202205) at dilution of 1:100 (40x lens).



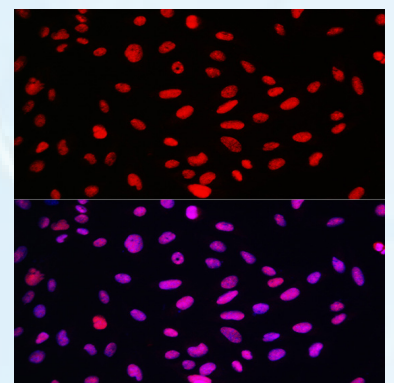
Immunohistochemistry of paraffin-embedded Human mammary cancer using METTL14 antibody (Gab202205) at dilution of 1:100 (40xlens).



Immunofluorescence analysis of NIH-3T3 cells using METTL14 Rabbit pAb (Gab202205) at dilution of 1:50 (40x lens). Blue: DAPI for nuclear staining.



Immunofluorescence analysis of PC-12 cells using METTL14 Rabbit pAb (Gab202205) at dilution of 1:50 (40x lens). Blue: DAPI for nuclear staining.



Immunofluorescence analysis of U-2 OS cells using METTL14 Rabbit pAb (Gab202205) at dilution of 1:50 (40x lens). Blue: DAPI for nuclear staining.

* For research use only. Not for therapeutic or diagnostic purposes.

订购电话: 021-55089063

网址: www.genelily.com

技术支持: service@genelily.com